

TOLERANCES

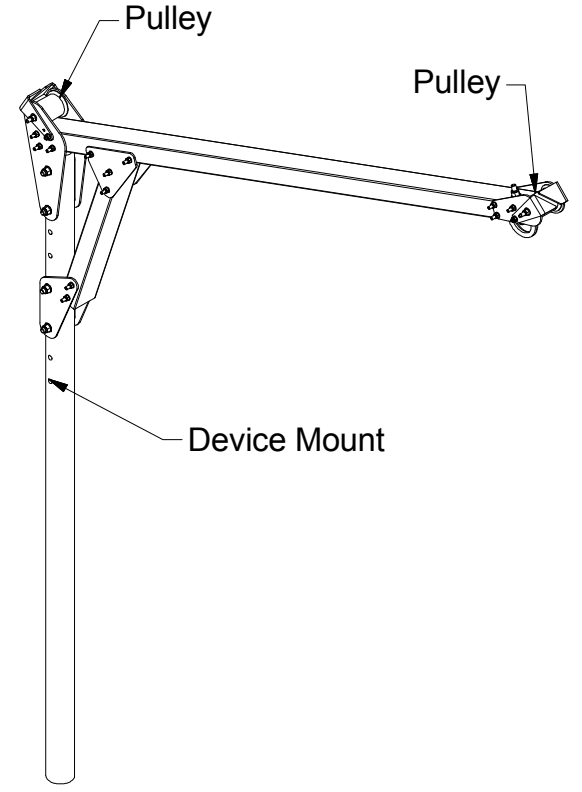
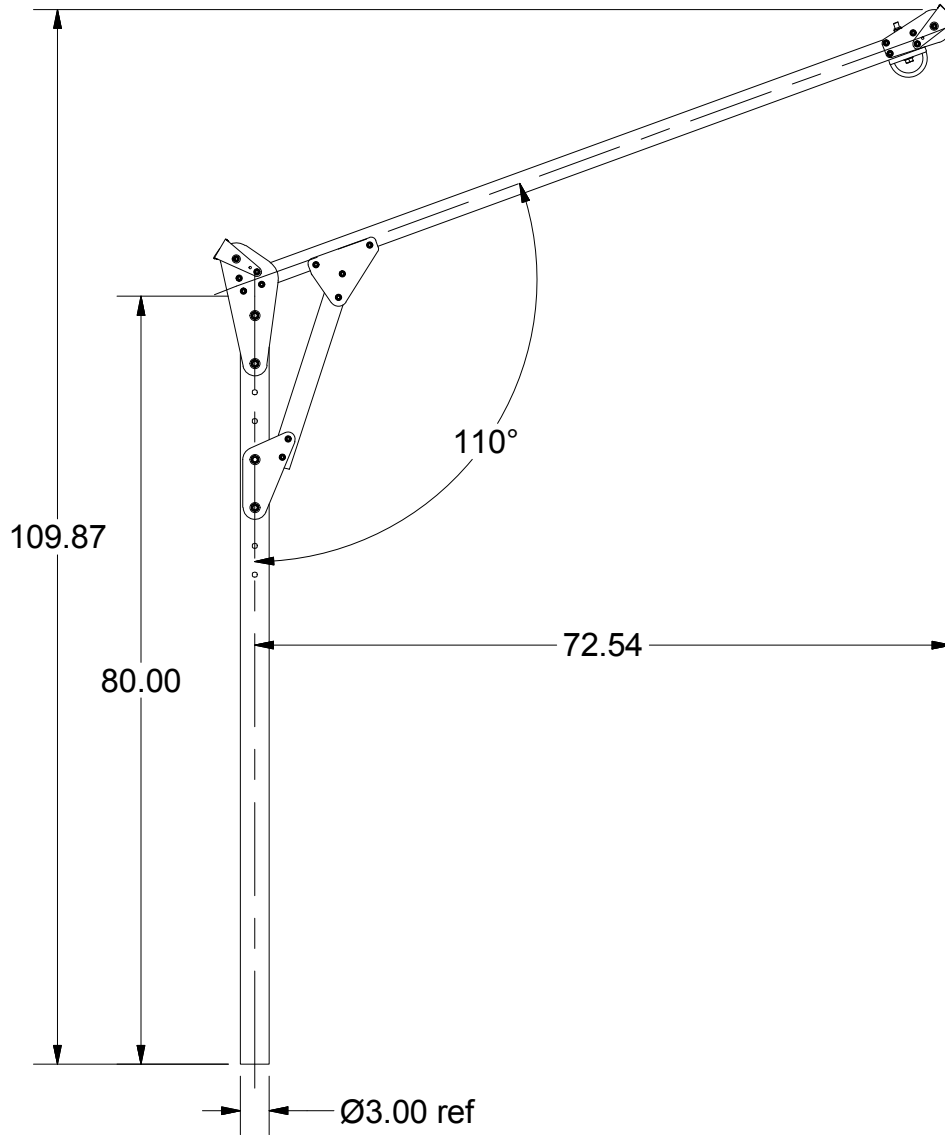
(UNLESS OTHERWISE SPECIFIED)

- .X± 0.040
- .XX± 0.020
- .XXX± 0.010
- ANGLES± 1°

METRIC DIMENSIONS

TOLERANCES

- (UNLESS OTHERWISE SPECIFIED)
- .X± 0.60
- .XX± 0.30
- ANGLES± 1°



Weight (est.): 80.0 lbs (36.4 kgs)

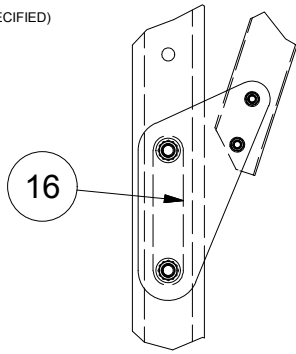
Specifications are subject to change without notice.

ITEM #	PART #	QTY	DESCRIPTION		
Tuff Built Products Inc.					
<small>INVENTOR</small>					
<small>DRAWN BY:</small> RGB		<small>DATE:</small> 10/1/2009		<small>SCALE:</small> NTS	<small>DIMENSIONS:</small> INCHES (mm)
<small>CHECKED BY:</small>		<small>DATE:</small>		<small>APPROVED BY:</small>	<small>DATE:</small>
<small>PROJECT:</small> 10398				<small>DWG SIZE:</small> A	<small>REV #:</small> 00
<small>DESCRIPTION:</small> Analog Davit, 72W-110H				<small>SHEET:</small> 1	<small>OF:</small> 2
				<small>DWG #:</small>	<small>PART #:</small> 50028

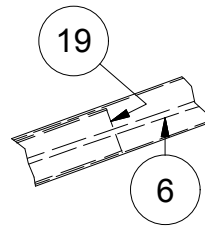
REV #	DATE	DESCRIPTION OF REVISION	BY

TOLERANCES
 (UNLESS OTHERWISE SPECIFIED)
 .X± 0.040
 .XX± 0.020
 .XXX± 0.010
 ANGLES± 1°

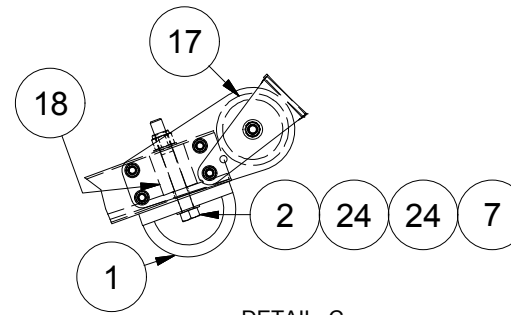
METRIC DIMENSIONS
TOLERANCES
 (UNLESS OTHERWISE SPECIFIED)
 .X± 0.60
 .XX± 0.30
 ANGLES± 1°



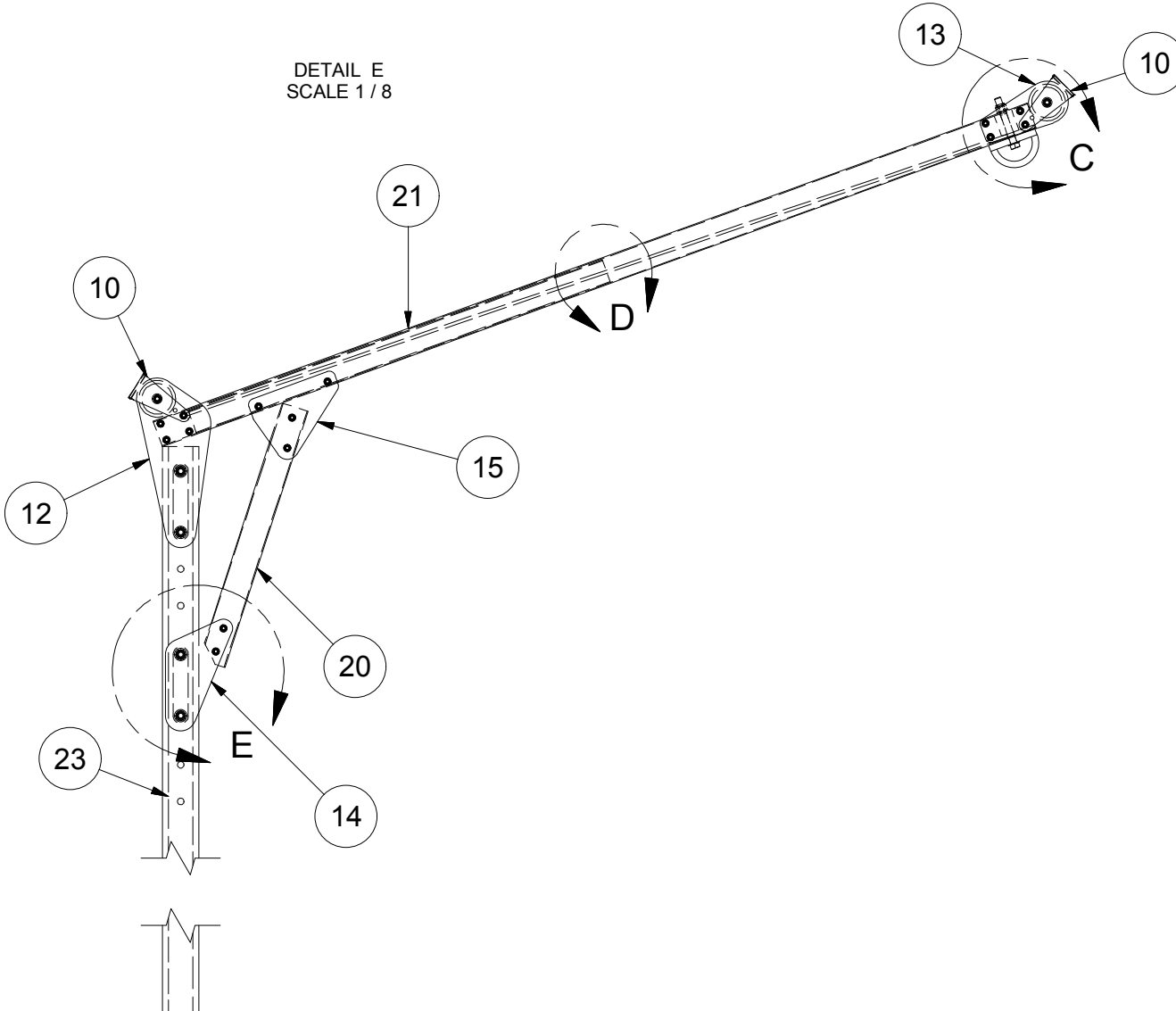
DETAIL E
SCALE 1/8



DETAIL D
SCALE 1/8



DETAIL C
SCALE 1/8



26	112238	28	Washer, 5/16 Flat Pltd (SAE)
25	111865	4	Washer, 3/8 Flat Pltd (SAE)
24	112688	10	Washer, 1/2 Flat Pltd (SAE)
23	125594	1	Vertical Mast Tube
22	123920	2	Tube, 5/8 x 3.15 (50029 Pulley Frt)
21	122714	1	Tube, #5 x 76 (50029 Arm)
20	122715	1	Tube, #5 x 22 (30095 Gusset)
19	122716	1	Tube, #4 x 36 (30095 Arm IN)
18	123670	1	Spacer, Anchor Point
17	122710	2	Pulley, 3.00 OD (50029 Frt)
16	122194	4	Plate, PRO-V 5000 lbs (14 ga Spacer)
15	122127	2	Plate, 3/16 HRS (Top Gusset)
14	122195	2	Plate, 3/16 HRS (Analog Davit Btm Gusset)
13	122700	2	Plate, 3/16 HRS (50029 Pulley Mtg)
12	122706	2	Plate, 3/16 HRS (50029 Main Plt)
11	122702	2	Plate, 3/16 HRS (50029 Cable Cover)
10	122703	2	Plate, 3/16 HRS (50029 Cable Cover Frt)
9	110617	14	Nut, 5/16 UNC Nylon Lock Pltd
8	110386	2	Nut, 3/8 UNC Nylon Lock Pltd
7	111709	5	Nut, 1/2 UNC Nylon Pltd
6	122711	1	Bracket, W/A Reserve Strength Bar (50029)
5	115315	14	Bolt, 5/16 x 4.50 UNC Pltd Grd5
4	110385	2	Bolt, 3/8 x 5.00 UNC Pltd Grd5
3	115362	4	Bolt, 1/2 x 4.50 UNC Pltd Grd 5
2	115332	1	Bolt, 1/2 x 4.00 UNC Pltd Grd5
1	115321	1	Anchorage, 1/2" Yellow Connector
ITEM #	PART #	QTY	DESCRIPTION

Tuff Built Products Inc.

INVENTOR:			
DRAWN BY: RGB	DATE: 10/1/2009	SCALE: NTS	DIMENSIONS: INCHES (mm)
CHECKED BY:	DATE:	APPROVED BY:	DATE:
PROJECT: 10398	DWG SIZE: A	REV #: 00	SHEET: 2 OF: 2
DESCRIPTION: Analog Davit, 72W-110H			DWG #: PART #: 50028

REV #	DATE	DESCRIPTION OF REVISION	BY